

FROM THE EDITORS OF  
LOG & TIMBER HOME LIVING

THE BEST

# LOG & TIMBER

HOMES OF THE YEAR

READERS' CHOICE

YOUR 10  
FAVORITE  
HOUSES  
OF 2021

27  
SMART  
FLOOR  
PLANS

+ Winning Kitchens,  
Great Rooms, Man Caves,  
She-Sheds, Baths & More!

Step inside  
this hybrid  
farmhouse

COZY CABINS • BEACH COTTAGES • MOUNTAIN LODGES  
HISTORICAL FARMHOUSES • BARN-STYLE HOMES





# THE BEST SPACES OF 2021

BEST GREAT ROOMS	20
BEST KITCHENS	36
BEST BEDROOMS	54
BEST BATHROOMS	68
BEST ACCESSORY BUILDINGS	80

## also in this issue

6	Editor's Note
86	Free Information Guide
88	Focus on Floor Plans
99	Regional Resource Guide
100	Builder/Dealer Marketplace
102	Supplier Marketplace



### ON THE COVER

*Logs and timbers come together flawlessly in this timeless Appalachian-style farmhouse. See more on page 46.*

PHOTO BY JAMES RAY SPAHN  
COURTESY OF STONEMILL LOG & TIMBER HOMES

# LOG & TIMBER HOME LIVING

AN ACTIVE INTEREST MEDIA PUBLICATION

Editor-in-Chief  
DONNA PEAK

Creative Director  
EDIE MANN

Art Director, Photo & Design  
MARK SORENSON

Managing Editor  
SUZANNA LOGAN

Associate Editor  
GRIFFIN SUBER

Director of Production  
PHIL GRAHAM

Advertising Coordinator  
KIM HOFF

Graphic Designer  
JULIE GREEN

Advertising Sales Director  
HEATHER GLYNN GNIAZDOWSKI  
703-731-9659  
hgniazdowski@aimmedia.com

National Accounts Manager  
MARI CAMPBELL

Account Executives  
PAM STINE  
RICH WILKINSON

Business Development Manager  
ZACK BUNTON

Business Development Representative  
GRIF BARTHIGHT

Director of Retail Sales  
SUSAN A. ROSE

Circulation Director  
PAIGE NORDMEYER



VP Digital Development  
BRIAN VAN HEUVERSWYN

Director of Digital Marketing  
LJ LINDHURST

Events Operations Manager  
CAROLYN WALSH

Digital Producer  
KATHERINE OWEN

Marketing Coordinator  
JOSH COHN

Content Marketing Manager  
JORDAN ALLEN

Exhibit Sales,  
Log and Timber Home Shows  
ERIC JOHNSON  
SAMANTHA WATTERS

Catapult Creative Labs  
AMANDA PHILLIPS

AR Collections Representative  
TRACIE CHRISTENSEN

Human Resources  
SCOTT ROEDER  
KIRSTEN KOELE

President Home Group  
PETER H. MILLER

President Marine Group  
GARY DESANCTIS

VP People & Places  
JOANN THOMAS

CTO  
NELSON SAENZ

Senior VP Operations  
PATRICIA B. FOX

VP Digital Products & Platforms  
KATIE HERRELL

VP Accounting  
BART HAWLEY

Chairman  
ANDREW W. CLURMAN

Chairman Emeritus  
EFREM ZIMBALIST III



Log and Timber Home Living® (USPS# 005-515) (ISSN# 2691-0373) is published by the Home Group of Active Interest Media HoldCo, Inc. The known office of publication is located at 5710 Flatiron Parkway, Suite A, Boulder, CO 80301. Periodicals Postage paid at Boulder, CO, and additional mailing offices. The editorial office is located at 5710 Flatiron Parkway, Suite A, Boulder, CO 80301; P.O. Box 20730, Boulder, CO 80308. **CUSTOMER SERVICE:** P.O. Box 842, Des Moines, IA 50304-0842 or subscriptions@aimmedia.com. **COPYRIGHT:** 2021 by Active Interest Media HoldCo, Inc., Boulder, Colorado. This publication may not be reproduced, either in whole or part, in any form without written permission from the publisher. **PRIVACY STATEMENT:** Active Interest Media HoldCo, Inc. is committed to protecting your privacy. For a full copy of our privacy statement, go to aimmedia.com/privacy-policy.



**right** Cedar log walls, spruce purlins and pine roof boards create a cozy atmosphere for this 1,600-square-foot cabin. The home was designed with recreation and relaxation in mind, and so for owners who love the game, it only makes sense that the pool table takes up residence in the heart of the home's living area. When it is time to get to work, an open loft space above doubles as an office.

Photo courtesy of Katahdin Cedar Log Homes



**Katahdin Cedar Log Homes**

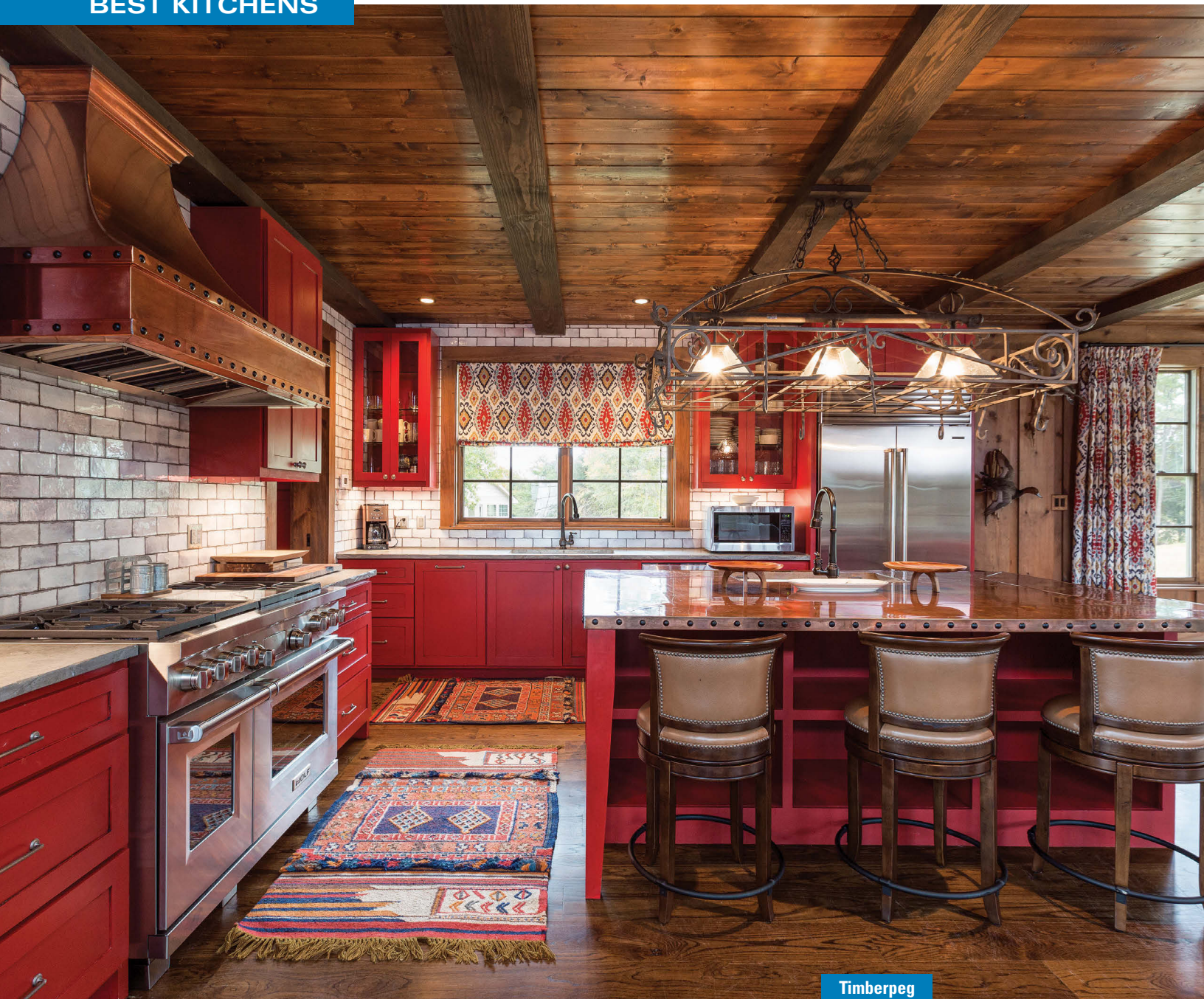


**Timberpeg**

**left** A stately walnut-stained Douglas fir timber frame sets the tone in this Arkansas hunting lodge. A 28-foot-tall stone hearth gives the great room a sense of rustic grandeur and provides the perfect backdrop for hunting trophies of years past, illuminated by spotlights on the beams. With 1,500+ square feet of open space to relax, there's plenty of room for guests to gather before and after the big hunt.

Photo by Beth Hall Photography; Courtesy of TIMBERPEG®; PLATT Architecture; Cline Construction





Timberpeg

*Want to know what's hot in home design? Look no further than what's cooking in the kitchen. From colorful cabinetry to oversized islands, these log and timber home kitchens sizzle with style.*

**above** Designed to be an efficient chef's space with true farmhouse finishes, this statement-making kitchen is the ultimate marriage of form and function. Custom countertops — copper on the island and concrete on the perimeter — set the stage for a rustic mix of materials, including a ceramic tile backsplash and a ceiling encased in white pine coated in a custom-blended Minwax stain.

Photo by Beth Hall Photography;  
Courtesy of TIMBERPEG®;  
PLATT Architecture; Cline Construction





**above right** Bunk beds get a grown-up spin in this hunting lodge, where more really is merrier. The reclaimed barnwood walls and a white pine ceiling create a rustic backdrop for crisp white custom bunks. Thoughtful touches like individual curtains, storage drawers under each bed and stairs to the top bunk make for a comfortable stay for all.

Photo by Beth Hall Photography; Courtesy of TIMBERPEG®; PLATT Architecture; Cline Construction

**DESIGNER, MANUFACTURER AND BUILDER OF CUSTOM KILN-DRIED LOG AND TIMBER HOMES**



**Honest Abe**  
Est. 1979  
LOG HOMES

**AMERICAN MADE IN  
MOSS, TENNESSEE**

**HONESTABE.COM  
1.800.231.3695**